



DTM2106
AISI 304 stainless steel

General description

- Manual folded paper towel dispenser, to be installed behind a mirror, with a high quality AISI 304 stainless steel body, designed and manufactured by Mediclinics S.A.
- Designed to be installed just behind a mirror and above the bathroom sink to maximize space within the bathroom.
- Easy to refill, it requires little space and it is a great choice for install in minimalist collective bathrooms.
- It can contain up to 600 Z-fold or 400 C-fold paper towels, without the need of any paper adapter.
- Body, back plate and paper outlet made of a single piece of folded and welded AISI 304 stainless steel.
- The geometry of the paper outlet minimizes the tear of the paper towel.
- Screws and plugs for brick wall mounting supplied.

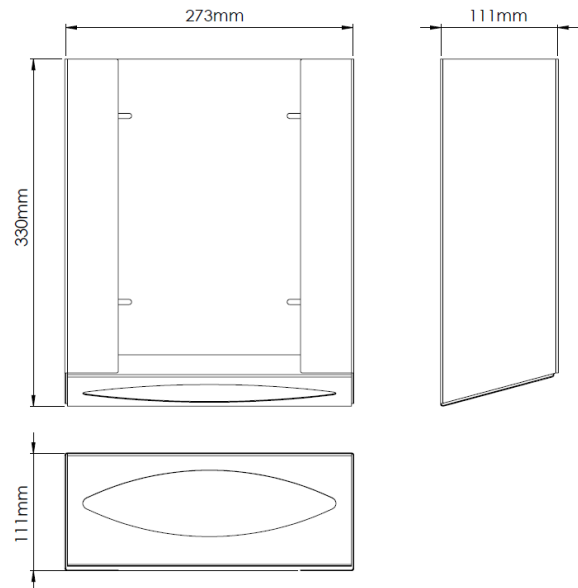
Components and materials

- **BODY:** made of AISI 304 stainless steel, 0.8 mm thick, free of burrs and sharp edges.
- **BACK PLATE:** made of AISI 304 stainless steel, 0.8 mm thick, with four slots for easy and quick installation.
- **PAPER OUTLET:** made of AISI 304 stainless steel, 0.8 mm thick. It has bound edges to minimize tearing of paper towels.

Technical specifications

Dimensions	273x330x111 mm
Paper dimensions	Max. 260x100 mm
Body, back plate and paper outlet thickness	0.8 mm
Net weight	1.4 Kg
Z towels capacity	600 units
C towels capacity	400 units

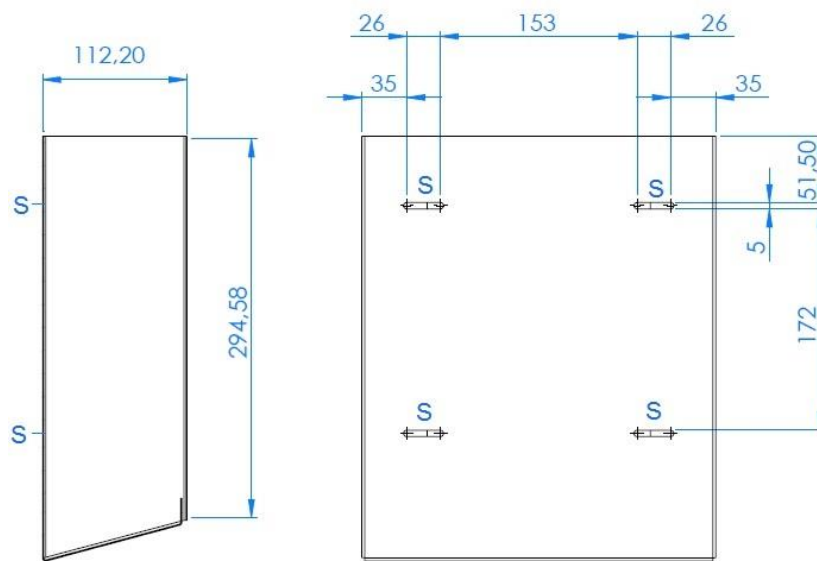
Dimensions



Dimensions $\pm 4\%$

MOUNTING TEMPLATE

Fix the paper dispenser through the holes of the wall plate by using the stainless steel screws supplied and taking into account the distances of the points indicated by an "S" in the next figure:



Mediclinics, S.A., reserves the right to make changes and/or modifications to the products and their specifications without prior notice
Review 11-20 © mediclinics S.A.

